

The background of the slide is a photograph of two Littorina littorea snails. One snail is in the upper left, and another is in the lower right. They are both on green, leafy plant stems. The snails have a light-colored, textured shell and a dark, wrinkled body. The text is overlaid on this image.

Periwinkle Recapture

Littorina littorea

Presentation by:

Hallie Rogers & Tyler Bergeron



About Periwinkles

- ◆ Life span
- ◆ Migration/History
- ◆ Food source(s)
- ◆ Reproduction Cycle

The Great Recapture



After testing the vertical movement of periwinkles, we were interested in finding out the horizontal movement and the site fidelity of the periwinkle snails.



Questions

- Did the periwinkles have a horizontal movement?
- Site fidelity? (do they stay close to home)



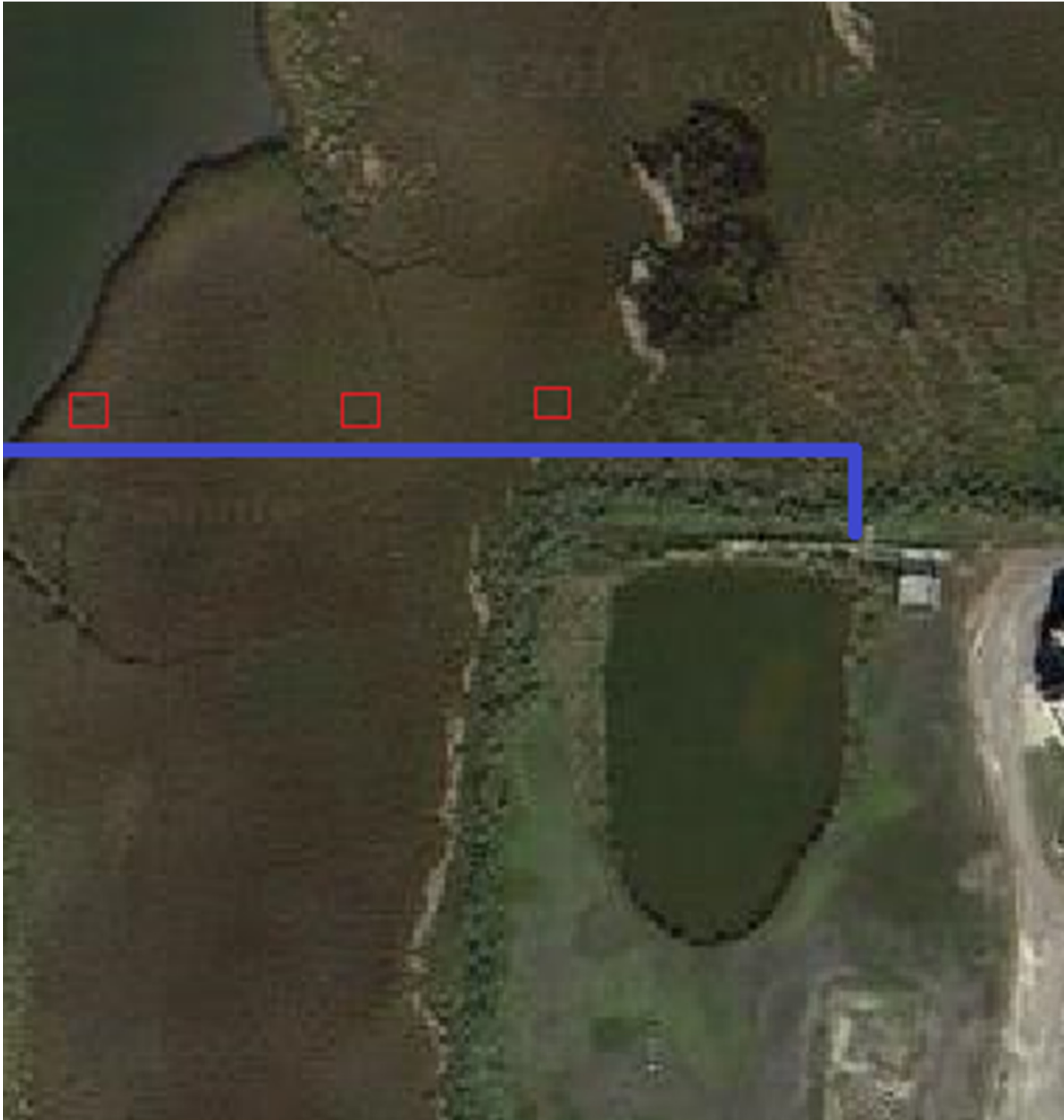
Hypothesis

Null Hypothesis:The periwinkles will have a low site fidelity and will have a lot of horizontal movement.

Alternate Hypothesis:The periwinkles will have a high site fidelity and will not have a lot of horizontal movement.

Experimental Design





Edge

Silver Gems

Initial collection: 77

	Center	Bottom Left	Bottom Right	Top Right
Tagged	65	0	0	0
Untagged	17	95	68	76

Middle

Green & Gold Gems

Initial collection: 116

Tagged
Untagged

Center	Top Right	Top Left	Bottom Right
89	0	0	0
49	96	107	84

Interior

Purple & Blue Gems

Initial collection: 43

	Center	Top Right	Bottom Left	Bottom Right
Tagged	23	0	1	0
Untagged	33	57	34	36

(Two green marked snails were found within the purple & blue testing site, although only one was in the quadrat which means we can only count one.)



Conclusion



With the given data, we can conclude that periwinkles have a high/medium site fidelity. Two periwinkles were found in the interior testing site that had traveled from the middle testing site making them outliers in our data.



Sources!

- ◆ www.britannica.com
- ◆ www.amnh.org
- ◆ www.edc.uri.edu
- ◆ www.sms.si.edu